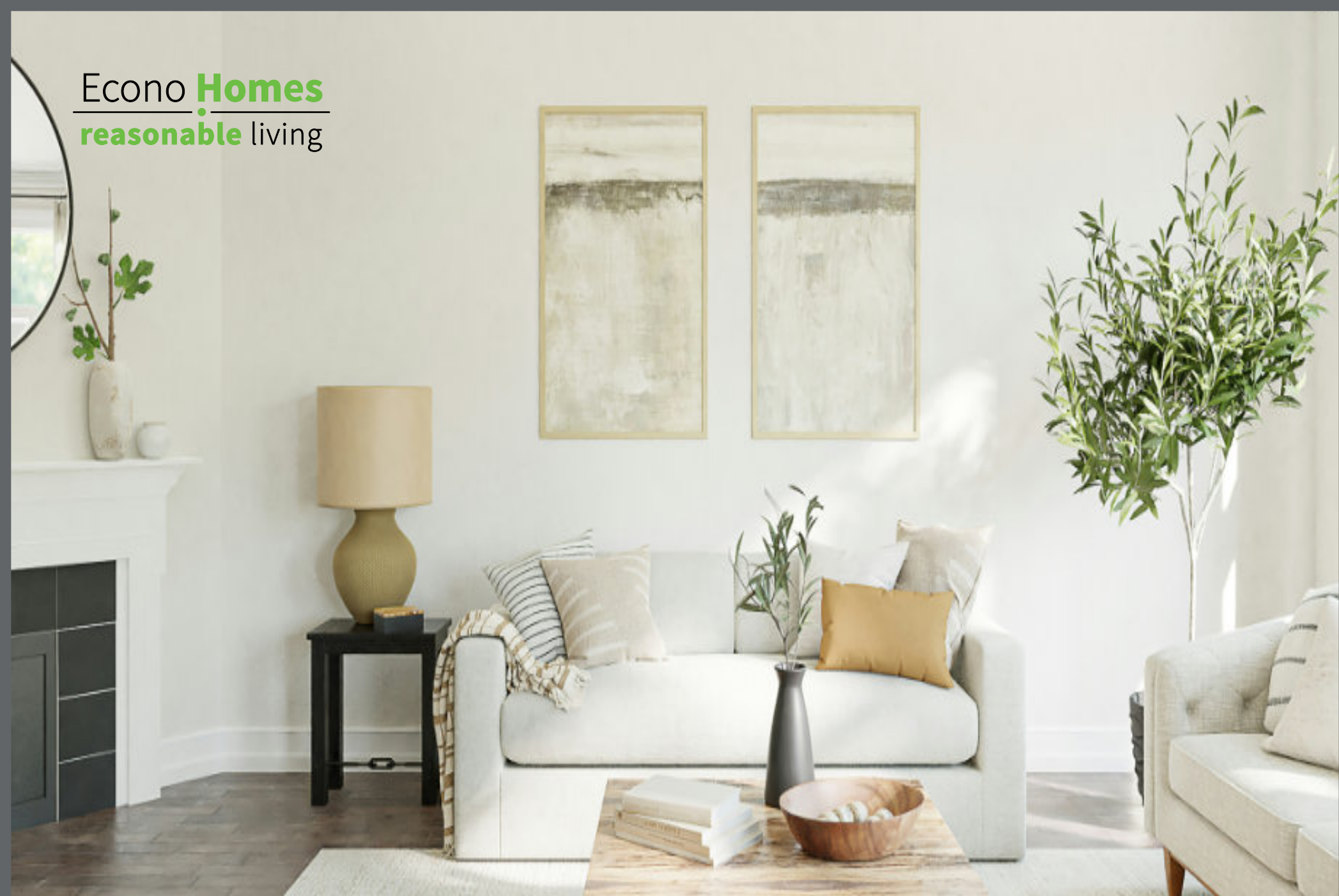


Econo **Homes**  
reasonable living



find the right home. for your family.  
with Econo Homes.



## Quality is more than just a word.

We are a team of highly motivated home builders and creative misfits who love a high standard of excellence. Econo Homes is a division of Cottage Crafters Inc. in Hepworth, well known for custom houses.

We offer more than 20 years of experience, knowledge and quality that are deeply rooted in our genes.

This love for our work motivated us to create a line of affordable houses from 510 ft<sup>2</sup> up to 2040 ft<sup>2</sup> for only \$125/ft<sup>2</sup> framed up. We know it is essential to own a home - for every person and for every family.

Econo Homes are not factory made, but are built on site ensuring your home will last for a very long time.



## Find your new home. Here. Now.

|                  |                      |            |             |
|------------------|----------------------|------------|-------------|
| The Sussex       | 510 ft <sup>2</sup>  | 1 Bedroom  | page 4, 5   |
| The Hampton      | 722 ft <sup>2</sup>  | 2 Bedrooms | page 6, 7   |
| The Sundance     | 842 ft <sup>2</sup>  | 2 Bedrooms | page 8, 9   |
| The Camrose      | 964 ft <sup>2</sup>  | 2 Bedrooms | page 10, 11 |
| The Koidern      | 1027 ft <sup>2</sup> | 2 Bedrooms | page 12, 13 |
| The Chester      | 1066 ft <sup>2</sup> | 3 Bedrooms | page 14, 15 |
| The Chester MKII | 1066 ft <sup>2</sup> | 3 Bedrooms | page 16, 17 |
| The Koidern MKII | 1087 ft <sup>2</sup> | 2 Bedrooms | page 18, 19 |
| The Klondike     | 1120 ft <sup>2</sup> | 2 Bedrooms | page 20, 21 |
| The Fairview     | 1178 ft <sup>2</sup> | 3 Bedrooms | page 22, 23 |
| The Wawa         | 1333 ft <sup>2</sup> | 3 Bedrooms | page 24, 25 |
| The Rigolet      | 1351 ft <sup>2</sup> | 2 Bedrooms | page 26, 27 |
| The Regina       | 1368 ft <sup>2</sup> | 3 Bedrooms | page 28, 29 |
| The Baddeck      | 1388 ft <sup>2</sup> | 2 Bedrooms | page 30, 31 |
| The Jasper       | 2040 ft <sup>2</sup> | 3 Bedrooms | page 32, 33 |
| Optional Add-ons |                      |            | page 34-35  |

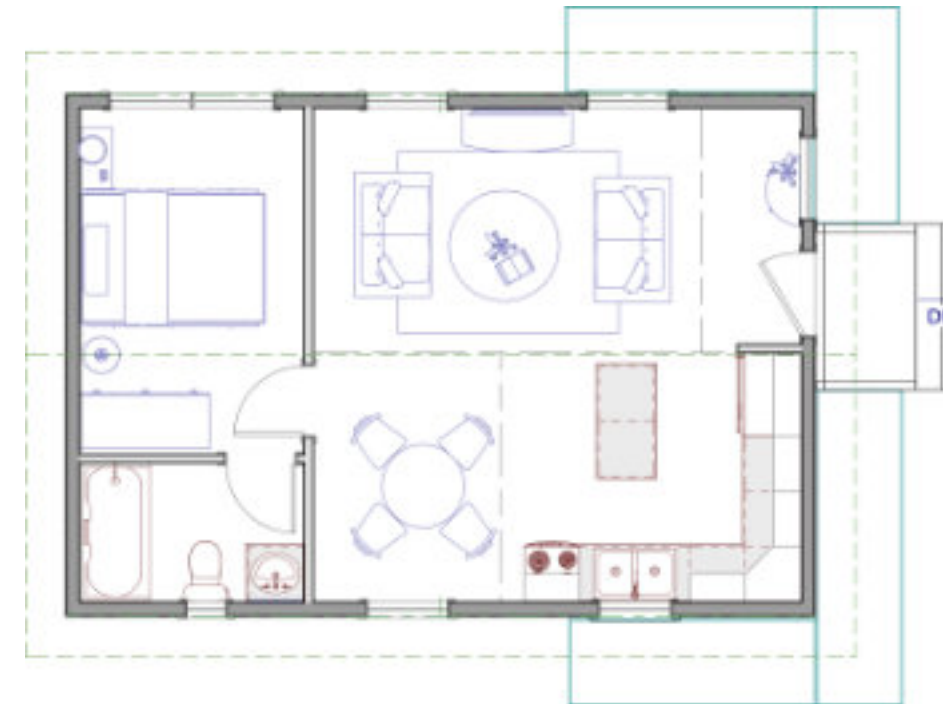




## The Sussex



## The Sussex | Specs



### Dimensions and more

|              |                     |
|--------------|---------------------|
| Footprint:   | 27'-1" x 18'-10"    |
| Living area: | 510 ft <sup>2</sup> |
| Bedrooms:    | 1                   |
| Bathrooms:   | 1                   |
| Living room: | 14'-2" x 8'-10"     |
| Kitchen:     | 10'-10" x 9'-0"     |
| Dining room: | 6'-11" x 9'-0"      |
| Bedroom:     | 8'-0" x 12'-6"      |
| Bathroom:    | 8'-0" x 5'-0"       |

### Starter Home? Cottage?

The Sussex is a 510 ft<sup>2</sup> house which could be a perfect cottage, tiny home, or starter home. It offers the right amount of space for various stages of life. The open-concept design features a combined dining and cooking area, as well as a comfortable living room.

### Multiple options you can choose from

- Decks in various sizes
- Detached one or two car garage
- Garden shed
- Gazebo
- Crawl space
- Full basement
- Outdoor watershed
- Pergola

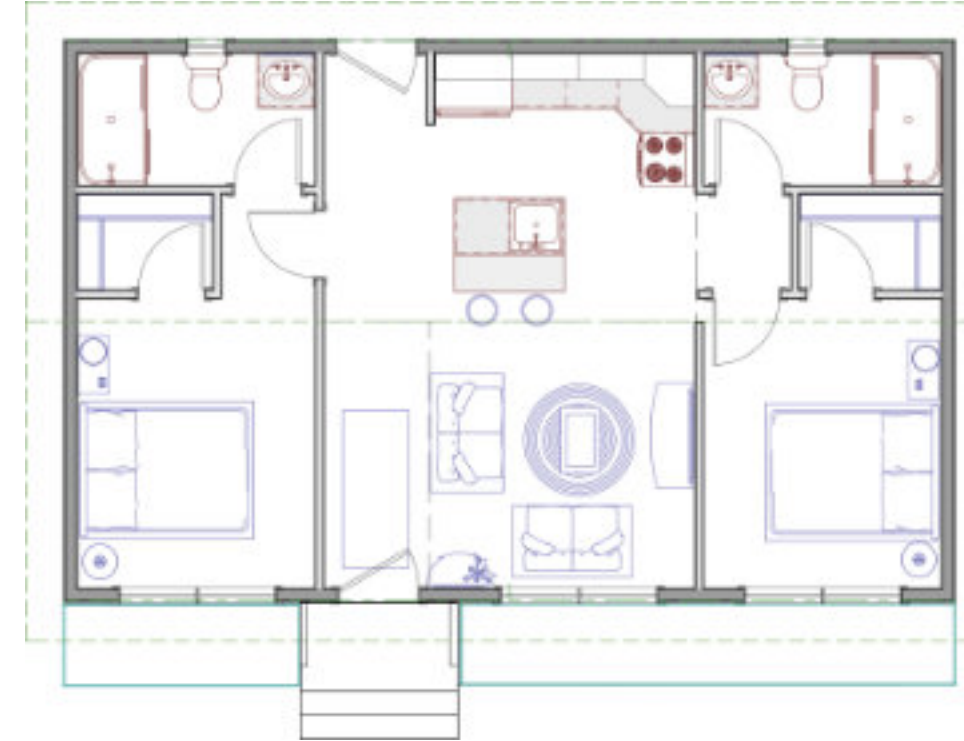




# The Hampton



## The Hampton | Specs



| Dimensions and more |                     |
|---------------------|---------------------|
| Footprint:          | 33'-10" x 21'-4"    |
| Living area:        | 722 ft <sup>2</sup> |
| Bedrooms:           | 2                   |
| Bathrooms:          | 2                   |
| Living room:        | 10'-1" x 10'-2"     |
| Kitchen:            | 14'-1" x 10'-2"     |
| Master Bedroom:     | 9'-0" x 11'-0"      |
| Bedroom #2:         | 9'-0" x 11'-0"      |
| Ensuite:            | 9'-0" x 5'-0"       |
| Bathroom #2:        | 9'-0" x 5'-0"       |

### The perfect home for a small budget.

Discover your family's first home - a two-bedroom, two-bathroom starter home all on one floor, perfect for those with children.

### Multiple options you can choose from

- Decks in various sizes
- Detached one or two car garage
- Garden Shed
- Gazebo
- Crawl space
- Full basement
- Outdoor watershed
- Pergola

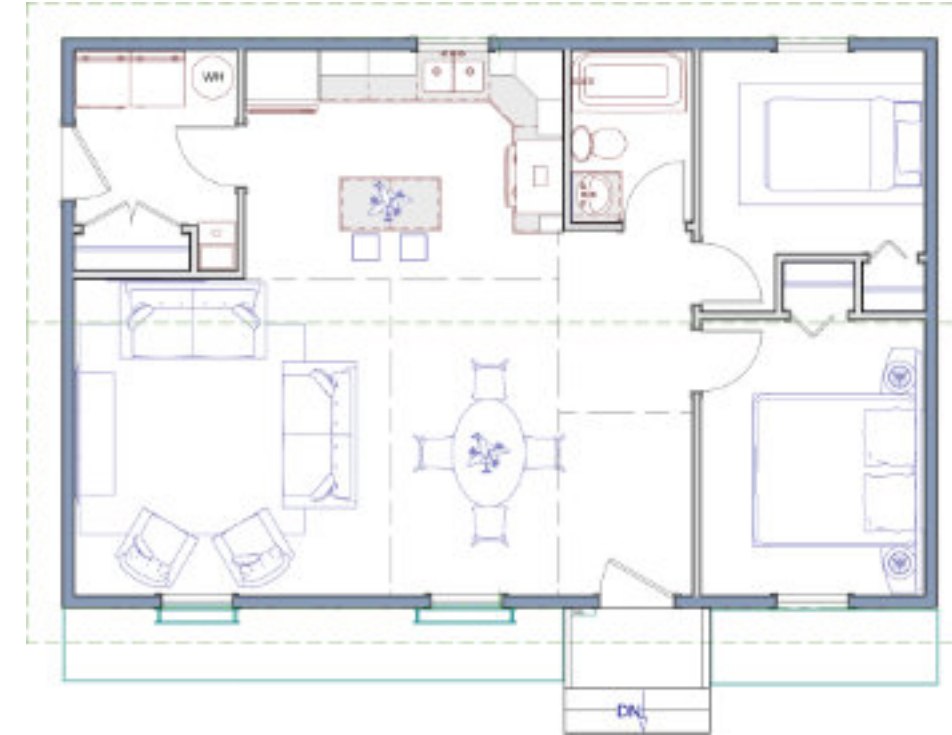




# The Sundance



## The Sundance | Specs



| Dimensions and more |                     |
|---------------------|---------------------|
| Footprint:          | 36'-0" x 23'-4"     |
| Living area:        | 842 ft <sup>2</sup> |
| Bedrooms:           | 2                   |
| Bathrooms:          | 1                   |
| Living room:        | 13'-0" x 13'-0"     |
| Kitchen:            | 13'-1" x 9'-5"      |
| Dining room:        | 6'-11" x 13'-0"     |
| Master Bedroom:     | 9'-2" x 11'-4"      |
| Bedroom #2:         | 9'-2" x 8'-4"       |
| Bathroom:           | 5'-0" x 7'-1"       |
| Laundry room:       | 6'-8" x 7'-2"       |

### A big tiny home.

The 842 ft<sup>2</sup> house may be compact, but it provides ample living space for a small family or retired couple. With 2 bedrooms and a full bathroom, the home offers privacy, while the open-concept living and kitchen area creates an excellent shared space for gatherings.

### Multiple options you can choose from

- Decks in various sizes
- Detached one or two car garage
- Garden Shed
- Gazebo
- Crawl space
- Full basement
- Pergola





## The Camrose



## The Camrose | Specs



| Dimensions and more   |                     |
|-----------------------|---------------------|
| Footprint:            | 40'-0" x 23'-4"     |
| Living area:          | 964 ft <sup>2</sup> |
| Bedrooms:             | 2                   |
| Bathrooms:            | 2                   |
| Living room:          | 18'-5" x 10'-0"     |
| Kitchen:              | 11'-1" x 12'-4"     |
| Master Bedroom:       | 10'-6" x 13'-6"     |
| Bedroom #2:           | 9'-5" x 12'-5"      |
| Ensuite:              | 5'-8" x 8'-6"       |
| Bath- / Laundry room: | 9'-5" x 9'-7"       |

### Bigger than it looks.

The Camrose is a cozy two-bedroom home featuring an en-suite bathroom and a spacious walk-in closet. The bright, inviting family room sets the stage for relaxing TV evenings or hosting gatherings.

### Multiple options you can choose from

- Decks in various sizes
- Detached one or two car garage
- Garden Shed
- Gazebo
- Crawl space
- Full basement
- Pergola
- Outdoor Watershed

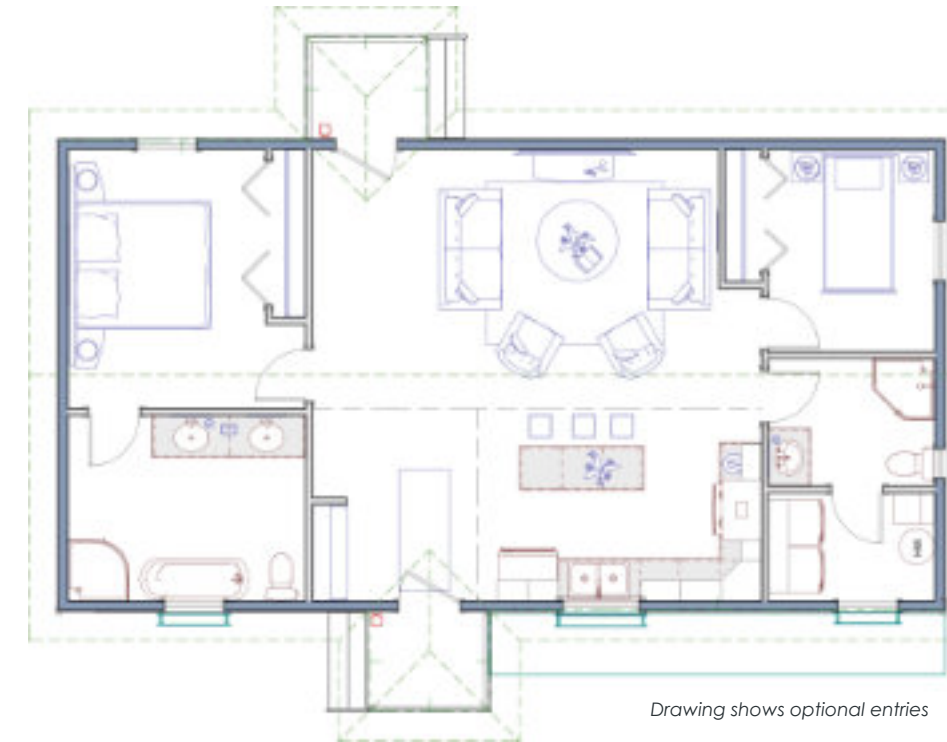




# The Koidern



## The Koidern | Specs



| Dimensions and more |                      |
|---------------------|----------------------|
| Footprint:          | 44'-0" x 23'-4"      |
| Living area:        | 1027 ft <sup>2</sup> |
| Bedrooms:           | 2                    |
| Bathrooms:          | 2                    |
| Living room:        | 20'-2" x 12'-10"     |
| Kitchen:            | 14'-1" x 9'-6"       |
| Master Bedroom:     | 9'-9" x 12'-10"      |
| Bedroom #2:         | 8'-3" x 10'-0"       |
| Ensuite:            | 11'-9" x 9'-2"       |
| Bathroom #2:        | 8'-3" x 10'-0"       |
| Laundry room:       | 8'-3" x 5'-4"        |

### Open minded and open concept

This spacious, open-concept home provides ample room for a couple, with the flexibility to accommodate an office or a second bedroom for a child. The living area flows seamlessly into a generously sized kitchen.

### Multiple options you can choose from

- Decks in various sizes
- Detached one or two car garage
- Garden Shed
- Gazebo
- Crawl space
- Full basement
- Covered entryway
- Pergola

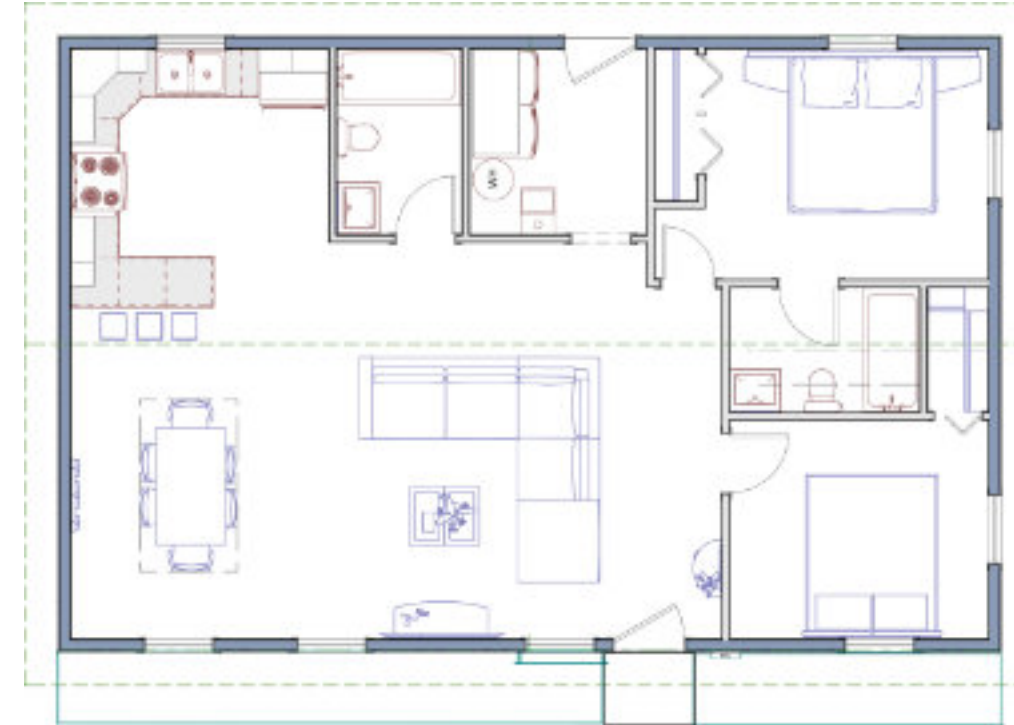




# The Chester



## The Chester | Specs



| Dimensions and more |                      |
|---------------------|----------------------|
| Footprint:          | 40'-6" x 26'-4"      |
| Living area:        | 1066 ft <sup>2</sup> |
| Bedrooms:           | 2                    |
| Bathrooms:          | 2                    |
| Living room:        | 16'-11" x 12'-8"     |
| Kitchen:            | 11'-1" x 12'-8"      |
| Dining room:        | 11'-1" x 12'-8"      |
| Master Bedroom:     | 12'-2" x 9'-11"      |
| Bedroom #2:         | 11'-1" x 9'-5"       |
| Ensuite:            | 8'-2" x 5'-4"        |
| Bathroom #2:        | 5'-3" x 9'-0"        |
| Laundry room:       | 7'-7" x 8'-0"        |

### Family fun and privacy

Bathed in natural light from the many windows, this 1,066 ft<sup>2</sup> home features 2 spacious bedrooms and an inviting, open-concept living area that is perfect for the whole family.

### Multiple options you can choose from

- Decks in various sizes
- Detached one or two car garage
- Garden Shed
- Gazebo
- Crawl space
- Full basement
- Pergola

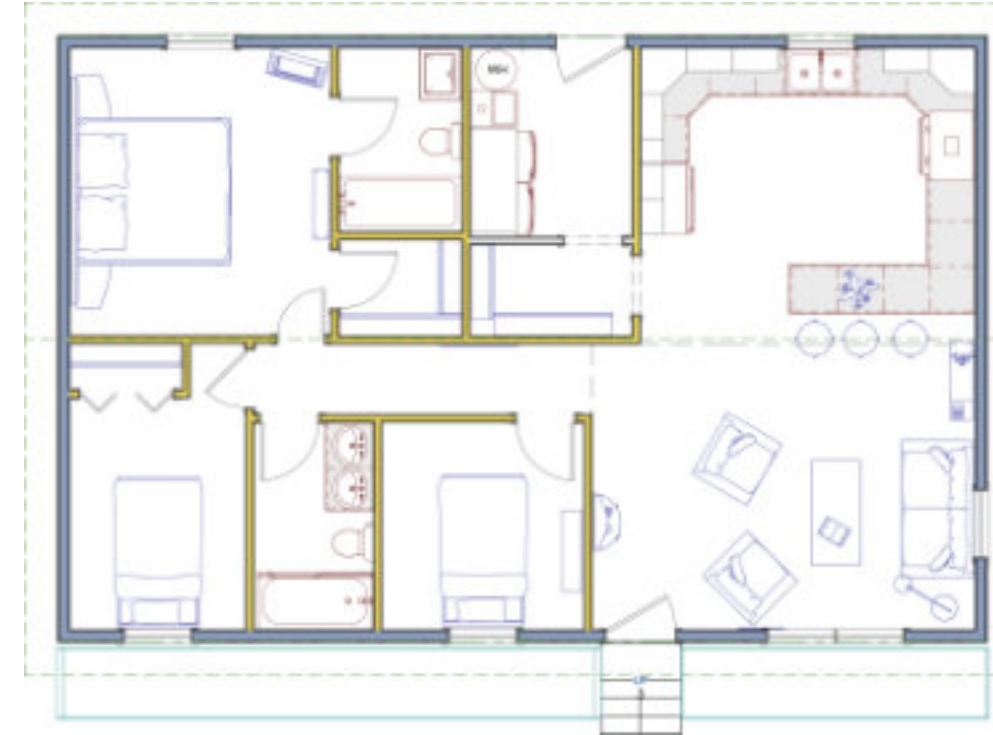




## The Chester MKII



## The Chester MKII | Specs



| Dimensions and more |                      |
|---------------------|----------------------|
| Footprint:          | 40'-6" x 26'-4"      |
| Living area:        | 1066 ft <sup>2</sup> |
| Bedrooms:           | 3                    |
| Bathrooms:          | 2                    |
| Living room:        | 16'-8" x 12'-5"      |
| Kitchen:            | 14'-7" x 12'-11"     |
| Pantry:             | 7'-1" x 3'-11"       |
| Master Bedroom:     | 11'-4" x 12'-6"      |
| Bedroom #2:         | 7'-8" x 10'-1"       |
| Bedroom #3:         | 8'-10" x 9'-0"       |
| Ensuite:            | 5'-4" x 8'-0"        |
| Bathroom #2:        | 5'-3" x 9'-0"        |
| Laundry room:       | 7'-1" x 8'-3"        |

### We have refined a great idea.

The bungalow's exceptional design draws inspiration from the classic Chester style. Featuring a seamlessly integrated open concept kitchen that flows harmoniously into a luminous and expansive living room. The Chester MK II offers the perfect blend of style and functionality - an inviting space for gathering, relaxing, and enjoying the easy, effortless beauty of a thoughtfully designed home.

### Multiple options you can choose from

- Decks in various sizes
- Detached one or two car garage
- Garden Shed
- Gazebo
- Crawl space
- Full basement
- Pergola

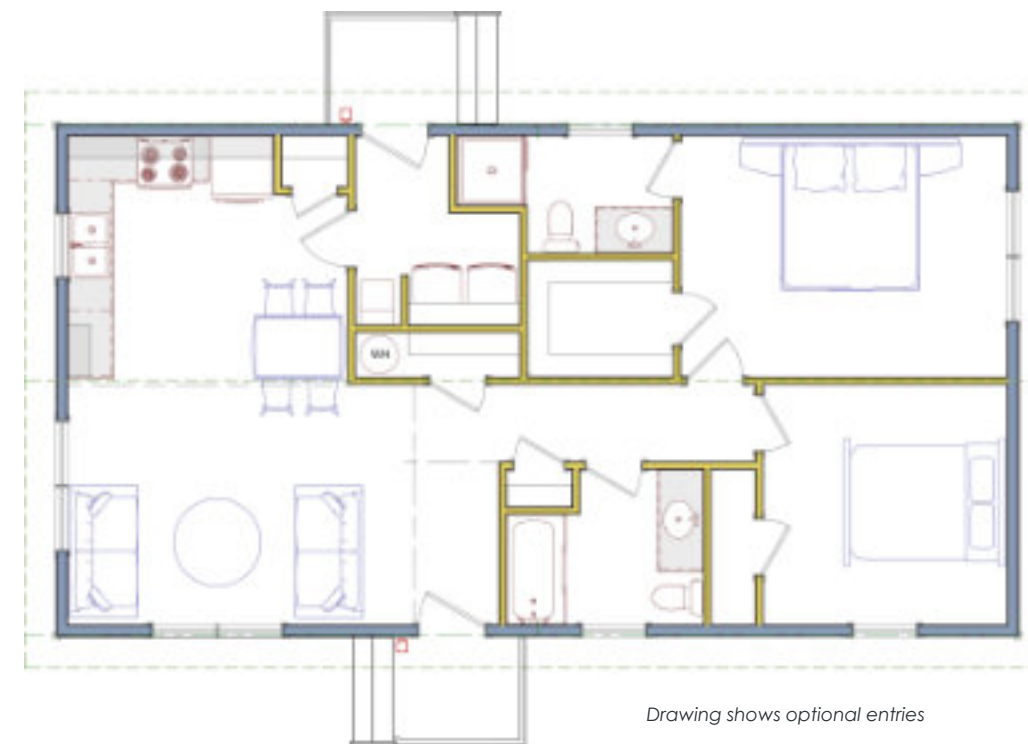




## The Koidern MKII



## The Koidern MKII | Specs



| Dimensions and more |                      |
|---------------------|----------------------|
| Footprint:          | 48'-7" x 26'-4"      |
| Living area:        | 1087 ft <sup>2</sup> |
| Bedrooms:           | 2                    |
| Bathrooms:          | 2                    |
| Living room:        | 15'-11" x 10'-0"     |
| Kitchen:            | 12'-10" x 11'-5"     |
| Master Bedroom:     | 14'-11" x 11'-0"     |
| Bedroom #2:         | 11'-2" x 11'-0"      |
| Ensuite:            | 9'-11" x 5'-4"       |
| Bathroom #2:        | 9'-0" x 7'-1"        |
| Laundry room:       | 7'-6" x 1'-1"        |

### A great house, a greater life.

The Koidern MKII bungalow is a prime example of a house that seamlessly merges simplicity and functionality. Despite its compact size, this dwelling manages to provide a sense of spaciousness through its cleverly implemented open concept living. The interior layout has been meticulously crafted to optimize the available square footage, creating a fluid and unencumbered flow between the various living spaces.

### Multiple options you can choose from

- Decks in various sizes
- Detached one or two car garage
- Garden Shed
- Gazebo
- Crawl space
- Full basement
- Pergola

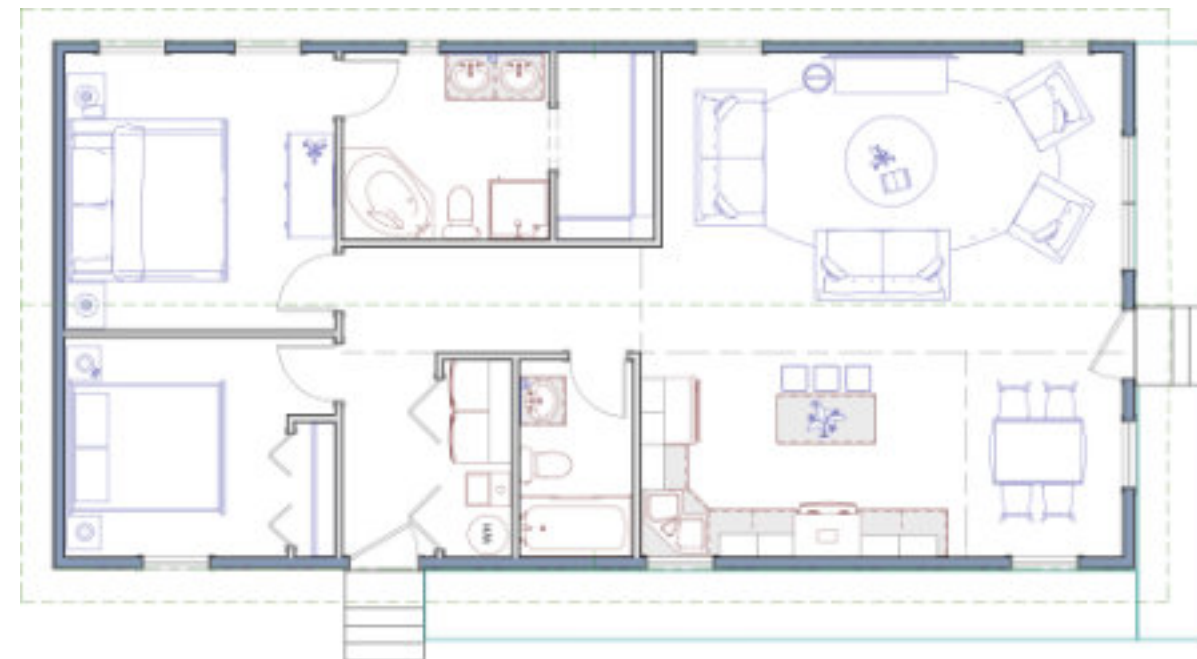




# The Klondike



## The Klondike | Specs



| Dimensions and more |                      |
|---------------------|----------------------|
| Footprint:          | 48'-0" x 23'-4"      |
| Living area:        | 1120 ft <sup>2</sup> |
| Bedrooms:           | 2                    |
| Bathrooms:          | 2                    |
| Living room:        | 20'-6" x 13'-3"      |
| Kitchen:            | 14'-6" x 9'-1"       |
| Dining room:        | 6'-11" x 9'-1"       |
| Master Bedroom:     | 12'-0" x 12'-3"      |
| Bedroom #2:         | 9'-10" x 9'-9"       |
| Ensuite:            | 9'-2" x 8'-3"        |
| Bathroom #2:        | 5'-0" x 8'-8"        |

### Small yet very big

This cozy home offers two full bathrooms, ample space for family and friends. An optional deck perfect for summer barbecues in the backyard. The spacious kitchen is ideal for preparing meals for your loved ones.

### Multiple options you can choose from

- Decks in various sizes
- Detached one or two car garage
- Garden Shed
- Gazebo
- Crawl space
- Full basement
- Pergola

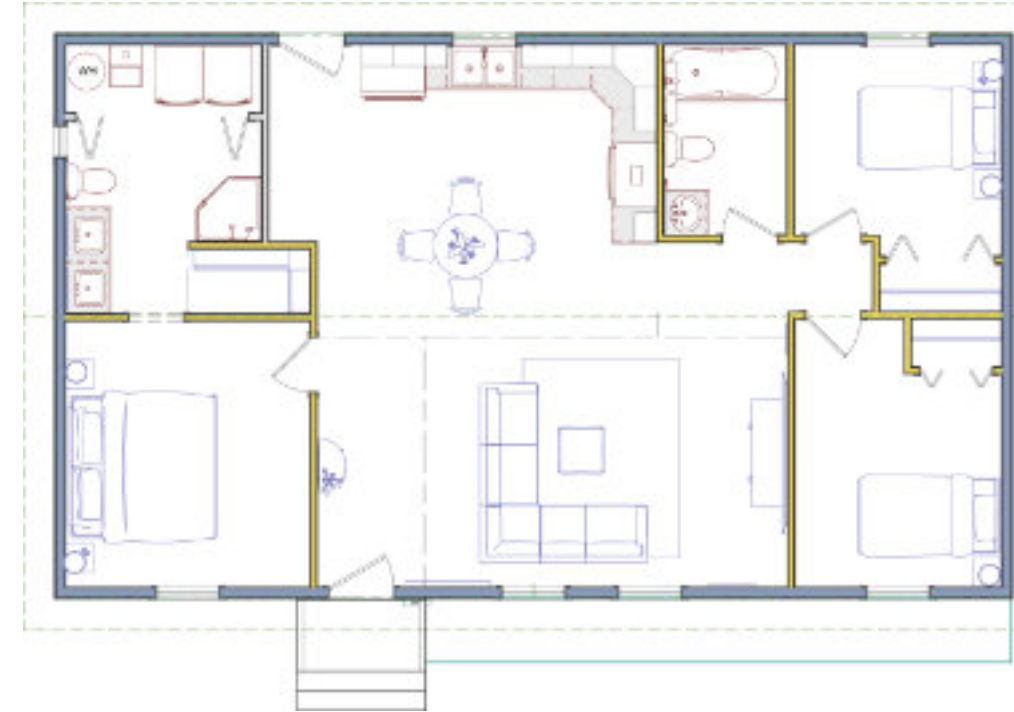




# The Fairview



## The Fairview | Specs



| Dimensions and more    |                      |
|------------------------|----------------------|
| Footprint:             | 44'-9" x 26'-4"      |
| Living area:           | 1178 ft <sup>2</sup> |
| Bedrooms:              | 3                    |
| Bathrooms:             | 2                    |
| Living room:           | 17'-0" x 11'-9"      |
| Kitchen / Dining room: | 18'-1" x 13'-7"      |
| Master Bedroom:        | 11'-5" x 12'-5"      |
| Bedroom #2:            | 9'-8" x 9'-10"       |
| Bedroom #3:            | 9'-8" x 12'-6"       |
| Ensuite:               | 9'-2" x 9'-0"        |
| Bathroom #2:           | 5'-9" x 8'-10"       |

### The Fairview: to feel as snug as a bug in a rug

The open-concept living area provides an ideal space for the whole family to spend quality time together. The master suite features an en-suite bathroom as well as a spacious walk-in closet. Additionally, this great home includes a second full-size bathroom, completing the functional and comfortable layout.

### Multiple options you can choose from

- Decks in various sizes
- Detached one or two car garage
- Attached one or two car garage
- Gazebo
- Crawl space
- Full basement
- Pergola
- Garden Shed





# The Wawa



## The Wawa | Specs



| Dimensions and more |                      |
|---------------------|----------------------|
| Footprint:          | 55'-6" x 24'-0"      |
| Living area:        | 1333 ft <sup>2</sup> |
| Bedrooms:           | 3                    |
| Bathrooms:          | 2                    |
| Living room:        | 22'-0" x 10'-7"      |
| Kitchen:            | 14'-7" x 12'-5"      |
| Dining room:        | 12'-5" x 12'-5"      |
| Master Bedroom:     | 13'-11" x 10'-9"     |
| Bedroom #2:         | 10'-11" x 8'-7"      |
| Bedroom #3:         | 10'-0" x 9'-4"       |
| Ensuite:            | 11'-1" x 6'-1"       |
| Bathroom #2:        | 5'-3" x 10'-0"       |
| Laundry room:       | 11'-1" x 5'-5"       |

### Be creative!

This 1,333 ft<sup>2</sup> home features an open, inviting layout with a big family room and kitchen - the perfect setup for you and your family. Additionally, the home offers a dedicated office space, ideal if you need to work from home. The large backyard provides ample opportunity to get creative, such as adding a relaxing hot tub.

### Multiple options you can choose from

- Decks in various sizes
- Detached one or two car garage
- Attached one or two car garage
- Garden Shed
- Crawl space
- Full basement
- Pergola
- Three season room
- Gazebo

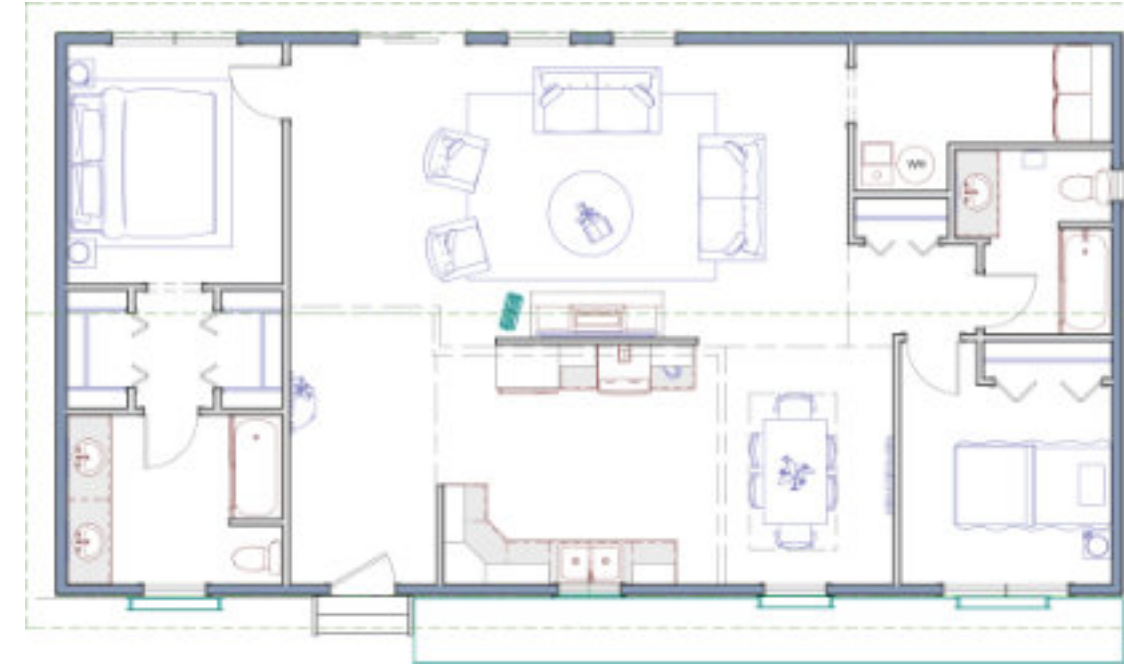




# The Rigolet



## The Rigolet | Specs



| Dimensions and more |                      |
|---------------------|----------------------|
| Footprint:          | 50'-8" x 26'-8"      |
| Living area:        | 1351 ff <sup>2</sup> |
| Bedrooms:           | 2                    |
| Bathrooms:          | 2                    |
| Living room:        | 26'-6" x 14'-7"      |
| Kitchen:            | 13'-7" x 11'-9"      |
| Dining room:        | 8'-2" x 11'-3"       |
| Master Bedroom:     | 10'-3" x 11'-4"      |
| Bedroom #2:         | 10'-0" x 9'-5"       |
| Ensuite:            | 10'-3" x 8'-0"       |
| Bathroom #2:        | 6'-1" x 8'-9"        |
| Laundry room:       | 12'-2" x 4'-8"       |

### A house full of great possibilities

This luxurious home offers an array of desirable features. The spacious master bedroom boasts a walk-in closet and an expansive en-suite bathroom. Additionally, the home includes a generously sized laundry room, an open kitchen and dining area, as well as a cozy and inviting family room.

### Multiple options you can choose from

- Decks in various sizes
- Detached one or two car garage
- Attached one or two car garage
- Garden Shed
- Gazebo
- Crawl space
- Full basement
- Pergola
- Three season room





# The Regina



## The Regina | Specs



| Dimensions and more |                      |
|---------------------|----------------------|
| Footprint:          | 50'-0" x 26'-8"      |
| Living area:        | 1368 ft <sup>2</sup> |
| Bedrooms:           | 3                    |
| Bathrooms:          | 2                    |
| Living room:        | 16'-4" x 16'-4"      |
| Kitchen:            | 13'-2" x 9'-4"       |
| Dining room:        | 12'-8" x 9'-4"       |
| Master Bedroom:     | 10'-5" x 12'-10"     |
| Bedroom #2:         | 10'-6" x 9'-0"       |
| Bedroom #3:         | 9'-8" x 9'-0"        |
| Ensuite:            | 8'-0" x 7'-5"        |
| Bathroom #2:        | 8'-0" x 5'-1"        |
| Laundry room:       | 8'-3" x 5'-1"        |
| Office:             | 8'-3" x 7'-5"        |

### Elevate your standard of living with The Regina

Whether you are a growing family or a discerning professional, the Regina was built to simplify and elevate your daily life. Its intelligent layout and premium features give you the space, comfort and convenience you deserve. Discover the joy of coming home to a house that was meticulously designed with your needs in mind.

### Multiple options you can choose from

- Decks in various sizes
- Detached one or two car garage
- Attached one or two car garage
- Garden Shed
- Crawl space
- Full basement
- Pergola
- Three season room
- Gazebo





# The Baddeck



## The Baddeck | Specs



| Dimensions and more |                      |
|---------------------|----------------------|
| Footprint:          | 52'-0" x 26'-8"      |
| Living area:        | 1388 ft <sup>2</sup> |
| Bedrooms:           | 2                    |
| Bathrooms:          | 2                    |
| Living room:        | 25'-1" x 15'-6"      |
| Kitchen:            | 16'-5" x 10'-5"      |
| Dining room:        | 10'-0" x 12'-0"      |
| Master Bedroom:     | 9'-10" x 13'-6"      |
| Bedroom #2:         | 10'-11" x 11'-10"    |
| Ensuite:            | 5'-5" x 9'-4"        |
| Bathroom #2:        | 9'-8" x 5'-10"       |
| Laundry room:       | 9'-8" x 7'-2"        |

### The perfect home for a young family

This 1,388 ft<sup>2</sup> open-concept home features 2 bedrooms and 2 bathrooms. Everything is on one convenient floor, making it an excellent choice for young families. The spacious living area creates an airy, inviting atmosphere.

### Multiple options you can choose from

- Decks in various sizes
- Detached one or two car garage
- Attached one or two car garage
- Garden Shed
- Crawl space
- Full basement
- Pergola
- Gazebo

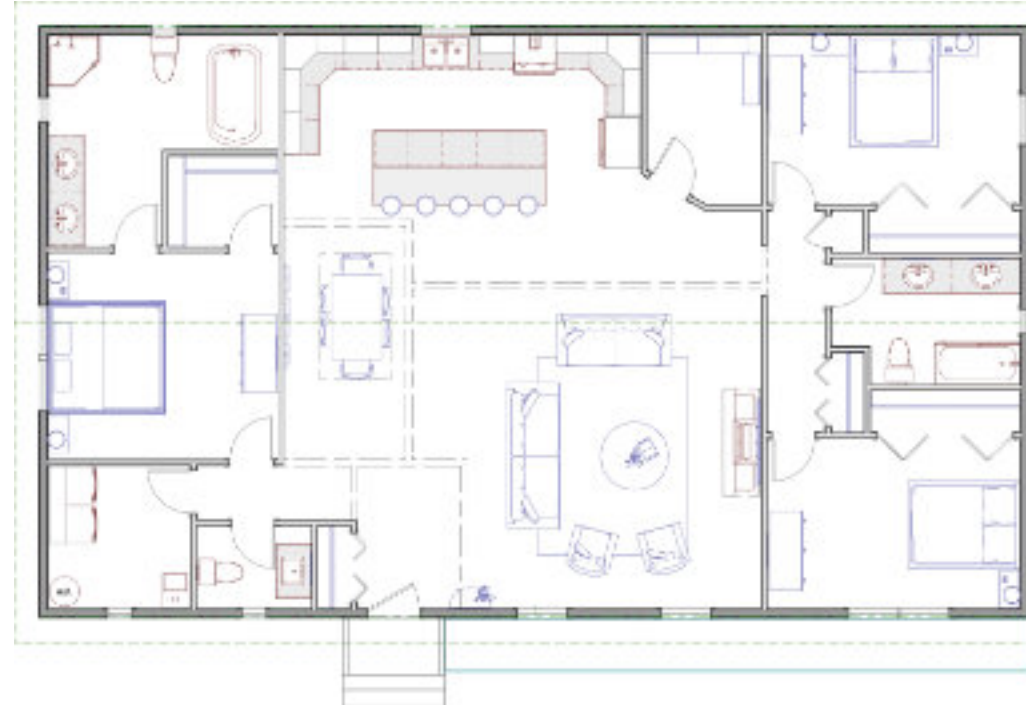




# The Jasper



## The Jasper | Specs



| Dimensions and more |                      |
|---------------------|----------------------|
| Footprint:          | 50'-5" x 34'-11"     |
| Living area:        | 2040 ft <sup>2</sup> |
| Bedrooms:           | 3                    |
| Bathrooms:          | 2 ½                  |
| Living room:        | 20'-10" x 19'-11"    |
| Kitchen:            | 21'-1" x 14'-10"     |
| Pantry:             | 6'-9" x 9'-0"        |
| Dining room:        | 7'-5" x 14'-2"       |
| Master Bedroom:     | 13'-7" x 12'-3"      |
| Bedroom #2:         | 14'-11" x 10'-0"     |
| Bedroom #3:         | 14'-11" x 10'-0"     |
| Ensuite:            | 13'-7" x 6'-9"       |
| Bathroom #2:        | 11'-1" x 7'-6"       |
| Bathroom #3:        | 6'-9" x 4'-11"       |
| Laundry room:       | 8'-5" x 8'-5"        |

### Room for more and more and more...

Recognizing that a large family requires ample living space. We designed this 2,040 square foot home to meet our clients' needs. The spacious, yet cozy, layout features a generously sized open-concept living area perfect for gatherings. Featuring 2.5 bathrooms to accommodate the household.

### Multiple options you can choose from

- Decks in various sizes
- Detached one or two car garage
- Attached one or two car garage
- Garden Shed
- Gazebo
- Crawl Space
- Full basement
- Pergola





## Looking to increase your home's value?

Our skilled team can construct any outdoor living space you desire.

Whether you envision a cozy covered porch or an expansive deck perfect for barbecues, we'll design and build it to your specifications.

Protect your prized possessions by adding a garage or shed for your boat, ATV and more. Complete the look with a custom carport.

The possibilities are endless - let your creativity shine!



large deck

### Unlock your backyard's full potential with a deck.

- Durable, weather-resistant construction
- Seamlessly blends with your home's exterior
- Increases usable square footage and home value

With a big deck, you can finally bring your backyard dreams to life. Imagine hosting memorable gatherings with friends and family, or enjoying quiet moments of peace and tranquility surrounded by nature.

### A Gazebo - the ultimate oasis for friends and family

- Durable, weather-resistant construction
- Spacious design accommodates up to 10 guests
- Elegant canopy provides ample shade

Whether you are planning a dinner party or a lively summer BBQ, a Gazebo elevates any backyard occasion. Impress your guests with this one-of-a-kind centerpiece that becomes the new focal point of your outdoor living space.

Create lasting memories as you entertain friends and family in this private oasis. Your backyard has never looked or felt so inviting.



gazebo



sunroom

### Let the sunshine in. This bright, fully-insulated room will transform your home.

- Walls of windows all around
- Seamless patio door access
- Adds valuable extra space
- Comfortable year-round use

Imagine sipping your morning coffee surrounded by natural light, or hosting friends in your new airy, sun-drenched oasis.

The Sunny Addition is designed to bring the beauty of the outdoors into your home, elevating your living space and your mood. Whether you need a home office, a cozy reading nook, or a serene meditation space, this sunroom is the perfect addition to your home.



double garage

### Elevate your home's functionality with a garage.

- Accommodates two cars with ease
- Flexible attached or detached design options
- Durable construction for long-lasting use
- Enhances your property's curb appeal with a sleek, contemporary look

Say goodbye to the hassle of outdoor parking and embrace the convenience of a garage. This two-car garage seamlessly integrates with your home, whether you choose the attached or detached configuration.

It not only provides ample space for your vehicles but also offers generous storage for all your outdoor gear, tools and more.





Econo **Homes**  
**reasonable** living

Econo Homes  
99 Queen Street East  
Hepworth, N0H 1P0, Ontario  
Canada

Phone: 519-935-0990  
E-Mail: [live@econohomes.com](mailto:live@econohomes.com)  
Web: [www.econohomes.com](http://www.econohomes.com)  
Econo Homes is a division of Cottage Crafters Inc.