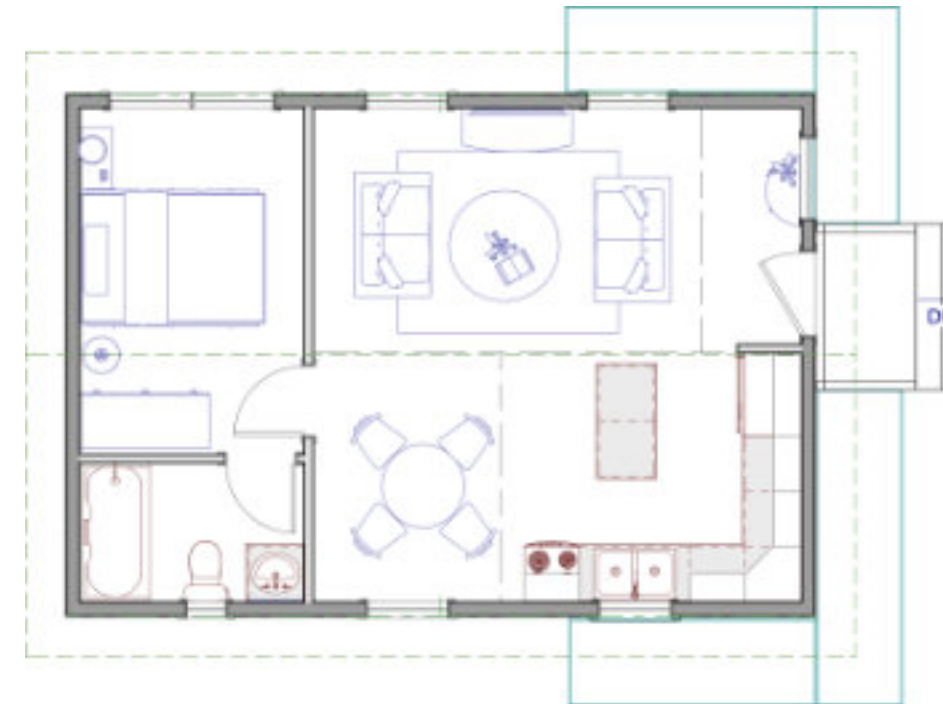


The Sussex



The Sussex | Specs



Dimensions and more	
Footprint:	27'-1" x 18'-10"
Living area:	510 ft ²
Bedrooms:	1
Bathrooms:	1
Living room:	14'-2" x 8'-10"
Kitchen:	10'-10" x 9'-0"
Dining room:	6'-11" x 9'-0"
Bedroom:	8'-0" x 12'-6"
Bathroom:	8'-0" x 5'-0"

Starter Home? Cottage?

The Sussex is a 510 ft² house which could be a perfect cottage, tiny home, or starter home. It offers the right amount of space for various stages of life. The open-concept design features a combined dining and cooking area, as well as a comfortable living room.

Multiple options you can choose from

- Decks in various sizes
- Detached one or two car garage
- Garden shed
- Gazebo
- Crawl space
- Full basement
- Outdoor watershed
- Pergola

