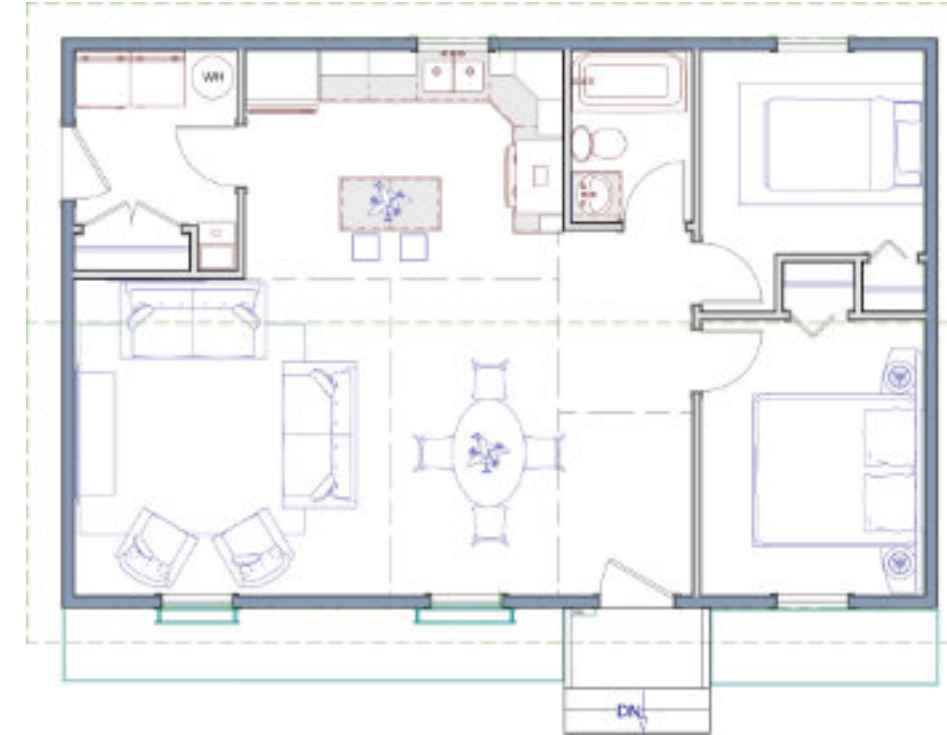


The Sundance



The Sundance | Specs



Dimensions and more	
Footprint:	36'-0" x 23'-4"
Living area:	842 ft ²
Bedrooms:	2
Bathrooms:	1
Living room:	13'-0" x 13'-0"
Kitchen:	13'-1" x 9'-5"
Dining room:	6'-11" x 13'-0"
Master Bedroom:	9'-2" x 11'-4"
Bedroom #2:	9'-2" x 8'-4"
Bathroom:	5'-0" x 7'-1"
Laundry room:	6'-8" x 7'-2"

A big tiny home.

The 842 ft² house may be compact, but it provides ample living space for a small family or retired couple. With 2 bedrooms and a full bathroom, the home offers privacy, while the open-concept living and kitchen area creates an excellent shared space for gatherings.

Multiple options you can choose from

- Decks in various sizes
- Detached one or two car garage
- Garden Shed
- Gazebo
- Crawl space
- Full basement
- Pergola

