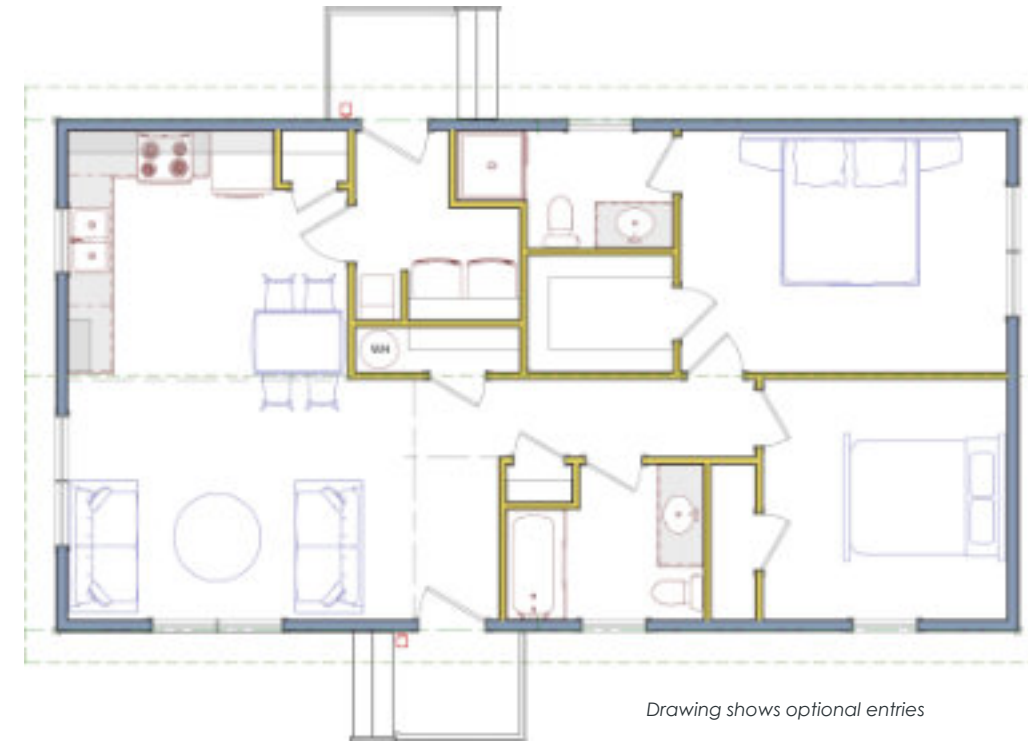


## The Koidern MKII



## The Koidern MKII | Specs



Dimensions and more	
Footprint:	48'-7" x 26'-4"
Living area:	1087 ft <sup>2</sup>
Bedrooms:	2
Bathrooms:	2
Living room:	15'-11" x 10'-0"
Kitchen:	12'-10" x 11'-5"
Master Bedroom:	14'-11" x 11'-0"
Bedroom #2:	11'-2" x 11'-0"
Ensuite:	9'-11" x 5'-4"
Bathroom #2:	9'-0" x 7'-1"
Laundry room:	7'-6" x 1'-1"

### A great house, a greater life.

The Koidern MKII bungalow is a prime example of a house that seamlessly merges simplicity and functionality. Despite its compact size, this dwelling manages to provide a sense of spaciousness through its cleverly implemented open concept living. The interior layout has been meticulously crafted to optimize the available square footage, creating a fluid and unencumbered flow between the various living spaces.

### Multiple options you can choose from

- Decks in various sizes
- Detached one or two car garage
- Garden Shed
- Gazebo
- Crawl space
- Full basement
- Pergola

