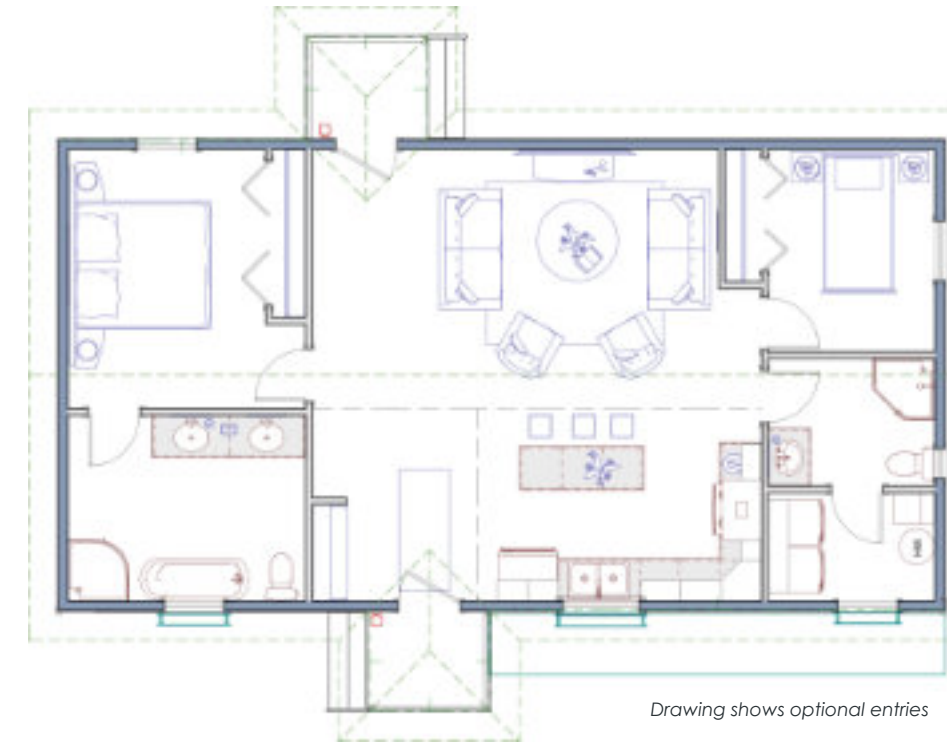


The Koidern



The Koidern | Specs



Dimensions and more	
Footprint:	44'-0" x 23'-4"
Living area:	1027 ft ²
Bedrooms:	2
Bathrooms:	2
Living room:	20'-2" x 12'-10"
Kitchen:	14'-1" x 9'-6"
Master Bedroom:	9'-9" x 12'-10"
Bedroom #2:	8'-3" x 10'-0"
Ensuite:	11'-9" x 9'-2"
Bathroom #2:	8'-3" x 10'-0"
Laundry room:	8'-3" x 5'-4"

Open minded and open concept

This spacious, open-concept home provides ample room for a couple, with the flexibility to accommodate an office or a second bedroom for a child. The living area flows seamlessly into a generously sized kitchen.

Multiple options you can choose from

- Decks in various sizes
- Detached one or two car garage
- Garden Shed
- Gazebo
- Crawl space
- Full basement
- Covered entryway
- Pergola

