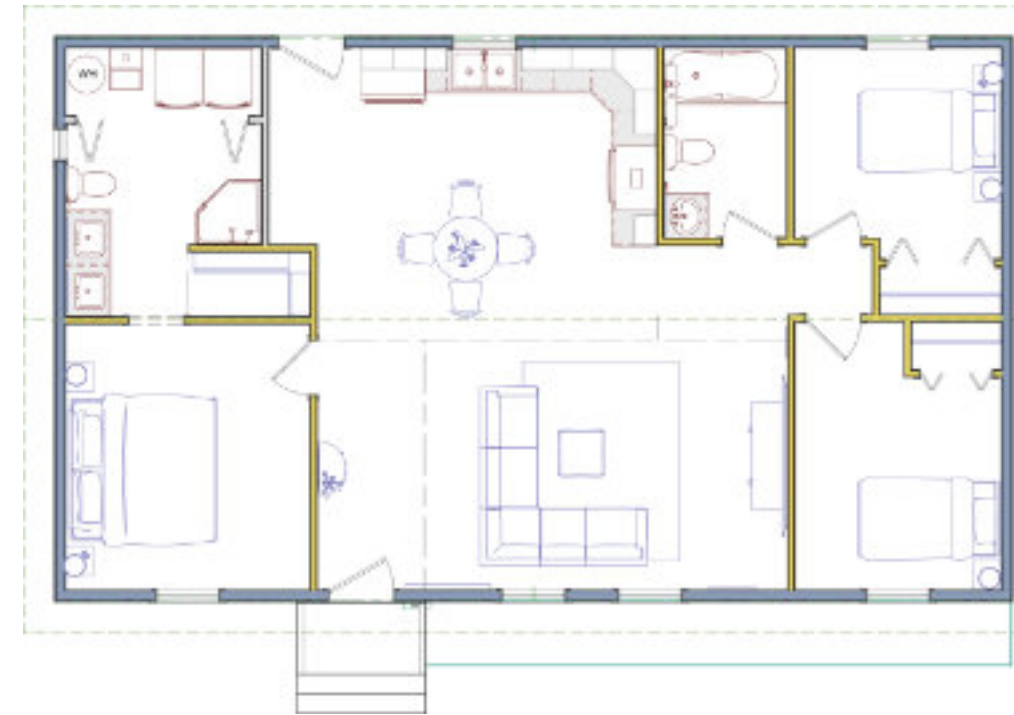


The Fairview



The Fairview | Specs



Dimensions and more	
Footprint:	44'-9" x 26'-4"
Living area:	1178 ft ²
Bedrooms:	3
Bathrooms:	2
Living room:	17'-0" x 11'-9"
Kitchen / Dining room:	18'-1" x 13'-7"
Master Bedroom:	11'-5" x 12'-5"
Bedroom #2:	9'-8" x 9'-10"
Bedroom #3:	9'-8" x 12'-6"
Ensuite:	9'-2" x 9'-0"
Bathroom #2:	5'-9" x 8'-10"

The Fairview: to feel as snug as a bug in a rug

The open-concept living area provides an ideal space for the whole family to spend quality time together. The master suite features an en-suite bathroom as well as a spacious walk-in closet. Additionally, this great home includes a second full-size bathroom, completing the functional and comfortable layout.

Multiple options you can choose from

- Decks in various sizes
- Detached one or two car garage
- Attached one or two car garage
- Gazebo
- Crawl space
- Full basement
- Pergola
- Garden Shed

