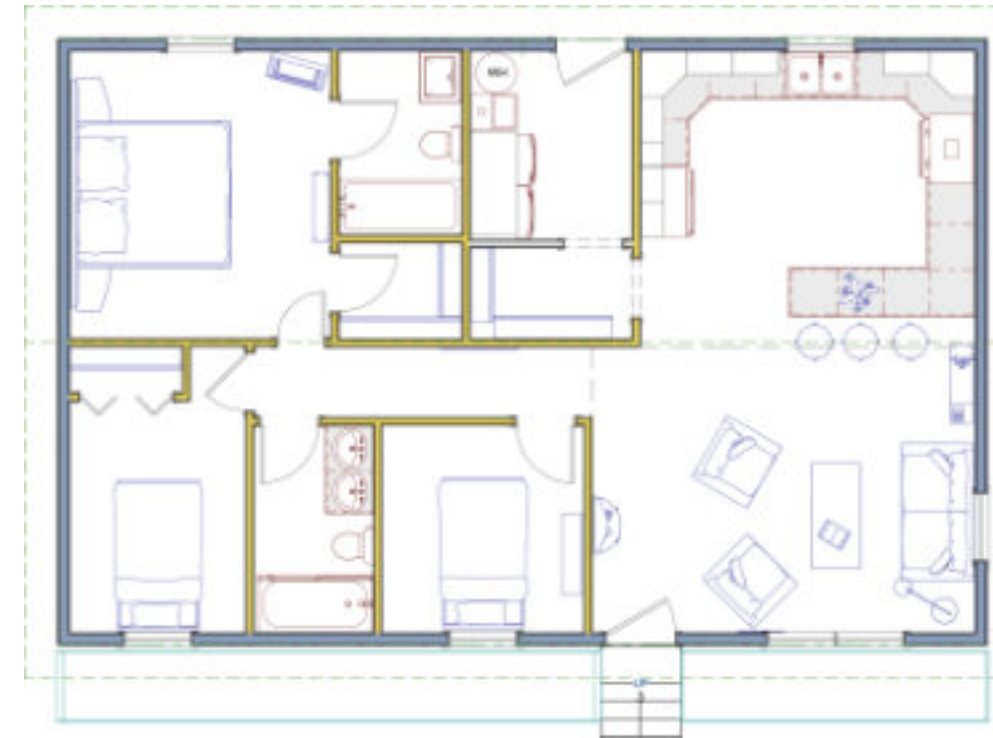


The Chester MKII



The Chester MKII | Specs



Dimensions and more	
Footprint:	40'-6" x 26'-4"
Living area:	1066 ft ²
Bedrooms:	3
Bathrooms:	2
Living room:	16'-8" x 12'-5"
Kitchen:	14'-7" x 12'-11"
Pantry:	7'-1" x 3'-11"
Master Bedroom:	11'-4" x 12'-6"
Bedroom #2:	7'-8" x 10'-1"
Bedroom #3:	8'-10" x 9'-0"
Ensuite:	5'-4" x 8'-0"
Bathroom #2:	5'-3" x 9'-0"
Laundry room:	7'-1" x 8'-3"

We have refined a great idea.

The bungalow's exceptional design draws inspiration from the classic Chester style. Featuring a seamlessly integrated open concept kitchen that flows harmoniously into a luminous and expansive living room. The Chester MK II offers the perfect blend of style and functionality - an inviting space for gathering, relaxing, and enjoying the easy, effortless beauty of a thoughtfully designed home.

Multiple options you can choose from

- Decks in various sizes
- Detached one or two car garage
- Garden Shed
- Gazebo
- Crawl space
- Full basement
- Pergola

